

TissueFlow

BONEFLO®

EXCEEDING THE GOLD STANDARD

“The award - winning orthopaedic suction handle with a vacuum filter mechanism to compound osteopromotive autologous tissue with a synthetic bone substitute.”

Ergonomic handle

Vacuum filter device

Suction tip

REF. No

910000001

Content

pc.

Packsize

15

CE 0044



TissueFlow
BONEFLO®

EXCEEDING THE GOLD STANDARD

The patented **BoneFlo®** orthopaedic suction handle was designed to optionally take-up the synthetic bone scaffold **CERASORB®** made from phase-pure, biomimetic porous β -Tricalciumphosphate.

The **BoneFlo®** suction handle is delivered with a unique internal filter and can be used as a traditional suction set in cases of musculoskeletal surgery, when the use of a bone substitute appears possible.

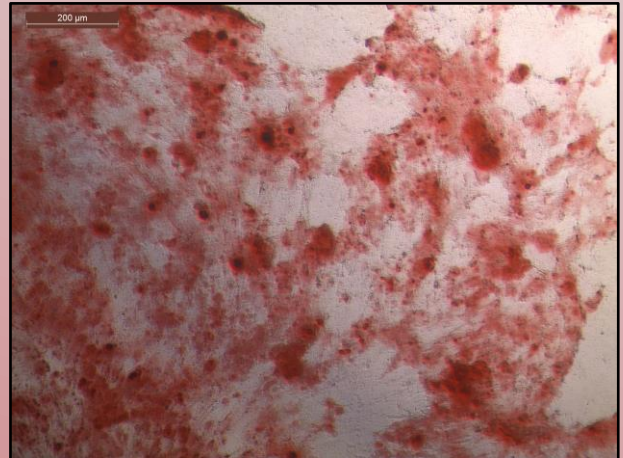
The filling of the vacuum filter with the phase-pure **CERASORB® β -TCP** is optional and the decision can be made by the surgeon during the surgical intervention. **BoneFlo®** may be combined with **CERASORB® β -TCP** under the responsibility of the surgeon.

Recent research data¹ suggest that the collected surgical site released tissue can enhance local osteoinduction.

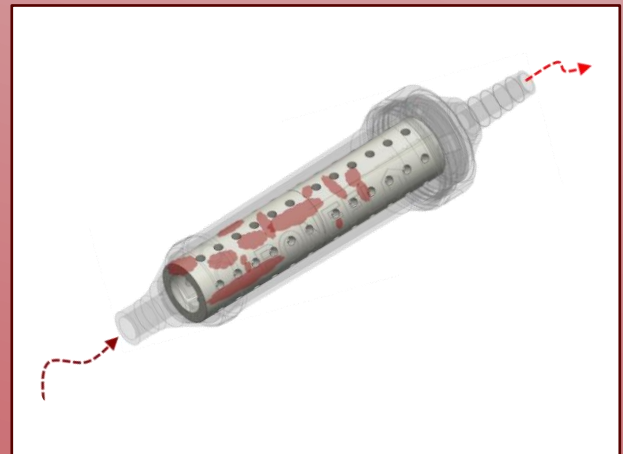
Latest studies conclude that surgical vacuum filter derived stromal cells are superior in proliferation to bone marrow aspirate² and that, during orthopedic surgery, tissue with relevant amounts of mesenchymal cells and growth factors can be concentrated by an advanced surgical vacuum³.

The **CERASORB® β -TCP** loaded **BoneFlo®** device provides enrichment of the synthetic bone substitute with regenerative autologous bone tissue during the suction procedure.

The **CERASORB® β -TCP biomimetic bone scaffolds** get biologically “activated” according to the principle of osteopromotion to improve bone healing.



CERASORB® β -TCP enriched with vacuum filter derived autologous tissue.



Working mechanism of **BoneFlo®** vacuum filter suction device.

For more information please visit

www.tissueflow.com

Sources:

1. TissueFlow® GmbH
2. Henze, K., Herten, M., Haversath, M. et al. Surgical vacuum filter-derived stromal cells are superior in proliferation to human bone marrow aspirate. *Stem Cell Res Ther* 10, 338 (2019). <https://doi.org/10.1186/s13287-019-1461-0>
3. *Int. J. Mol. Sci.* 2020, 21, 6393; doi:10.3390/ijms21176393